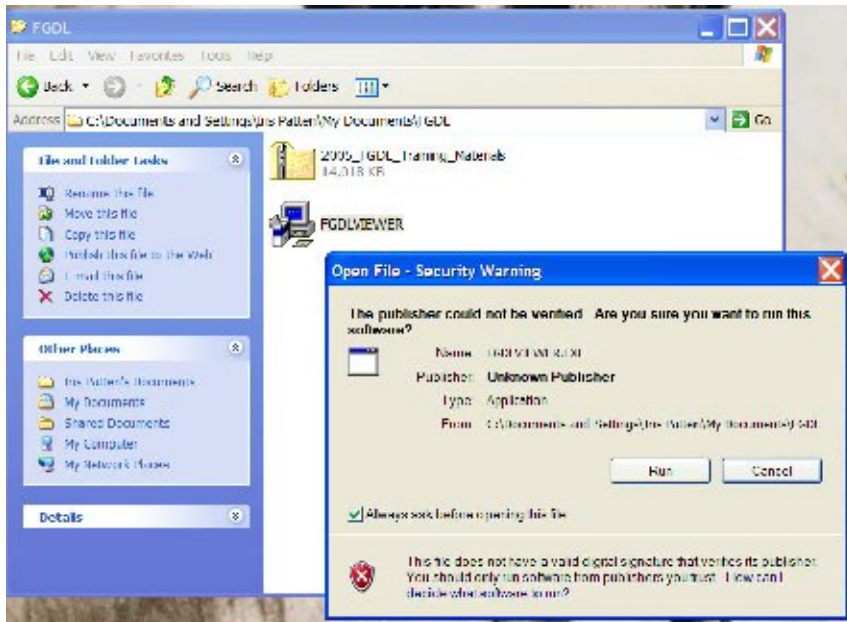


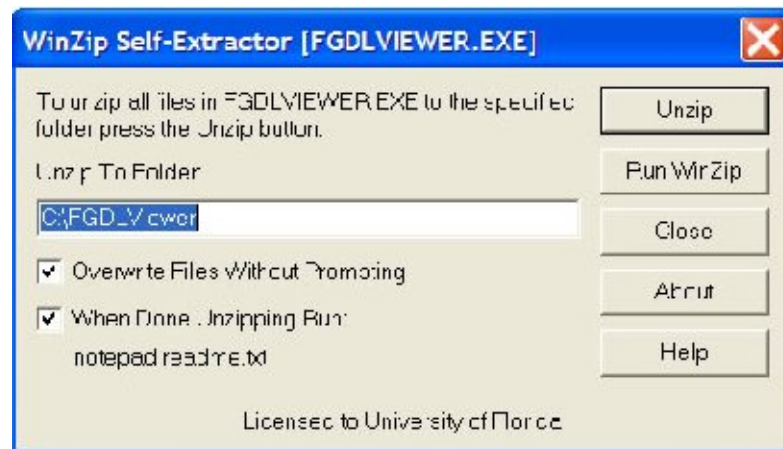
Installation Instructions for the FGDL Viewer for ArcMap 9.x

Install the Extension:

1. Download the latest version of the software at <http://www.fgdl.org/software.html>.
2. On your machine, navigate to the folder where the file was downloaded. Double-click on the .exe file.
3. If a security warning appears choose **Run** then click **OK**



4. The installation program shows the prompt below:



5. If ArcMap is installed in a different location change the disk drive letter accordingly, otherwise click Unzip to install and then click **Close**.

Installing on a Network:

NOTE: Should be done by system administrators!!

1. Change the path shown in the previous screen to the desired network location and click **Unzip** and then **Close** when finished.
2. Navigate to folder FGDL/Help and double-click on the file **fgdl_extension_getting_started_network.html**.
3. Follow the directions.
4. Click **OK** when the installation confirmation screen appears

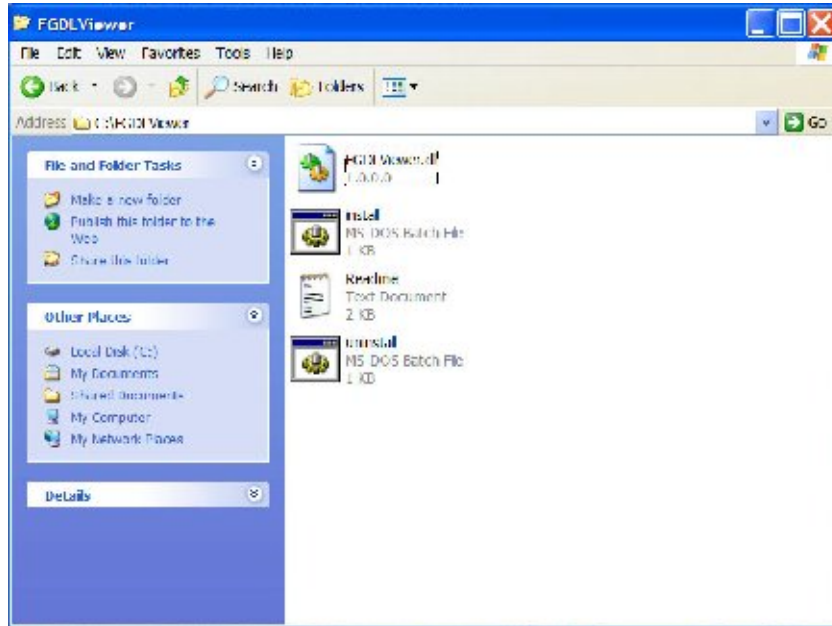


5. A Readme file containing the *FGDL Installation Instructions* will appear on the screen.

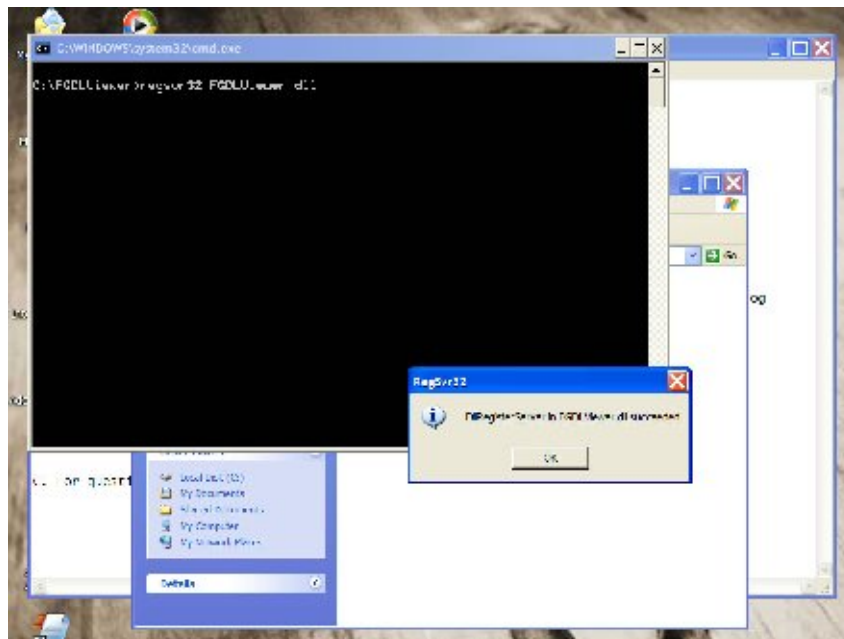
Part 2: Completing the Installation Process

NOTE: You must have administrative privileges in order to install this software on your computer. Otherwise the installation will **FAIL**.

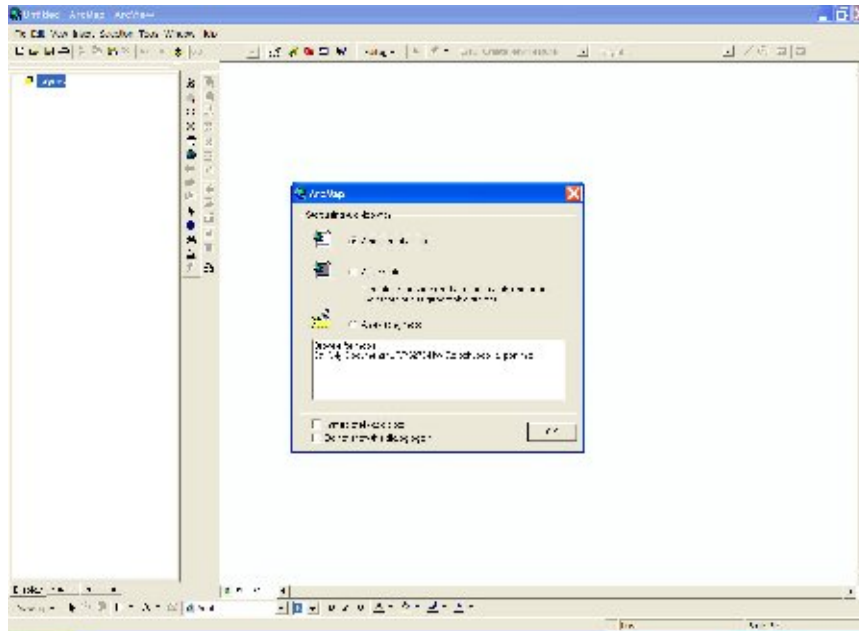
6. Navigate to the folder **C:\FGDLViewer** and double-click on the file **install.bat**.



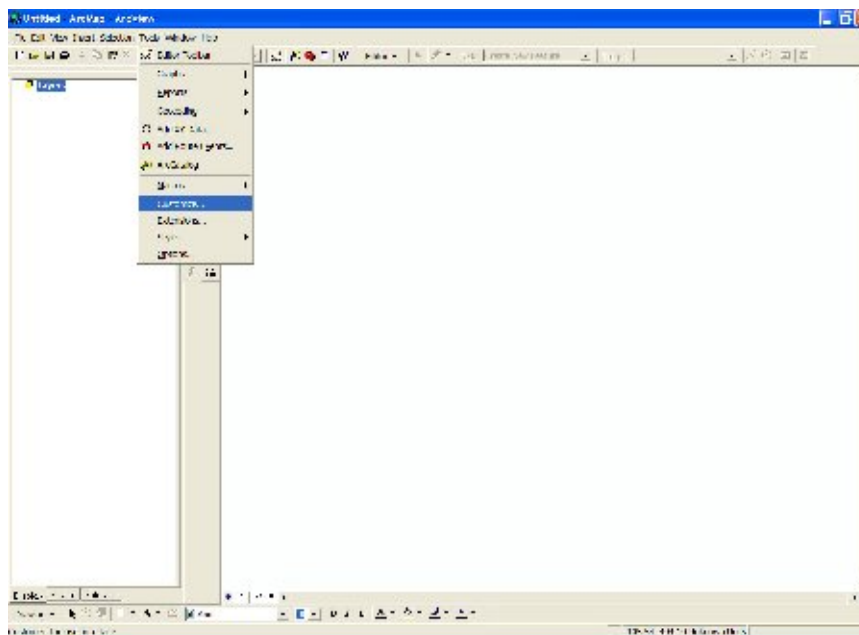
- a. A black screen will appear followed by the following dialog box.



7. Start ArcMap and choose Start ArcMap with a new empty map. Click **OK**.

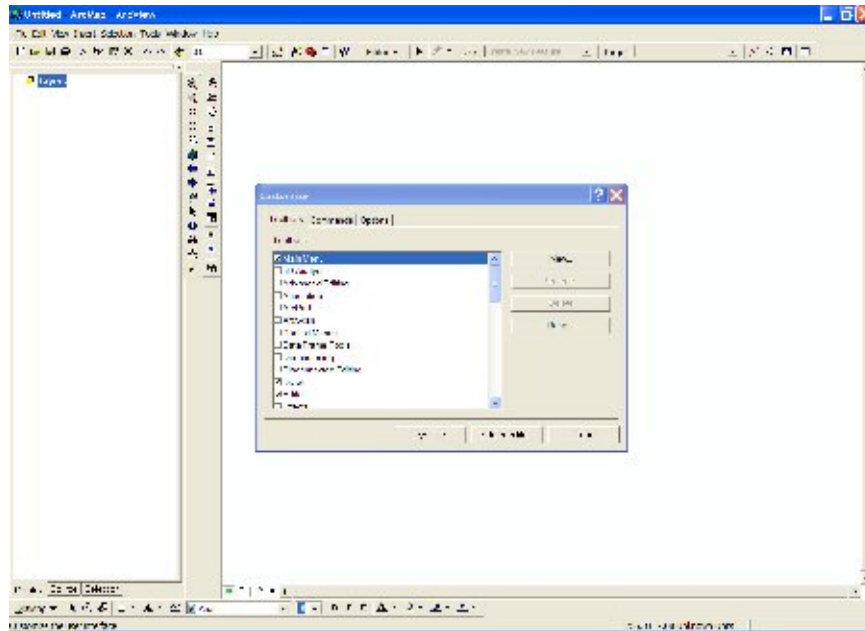


8. From within ArcMap, click **Tools** from the menu bar then **Customize**.



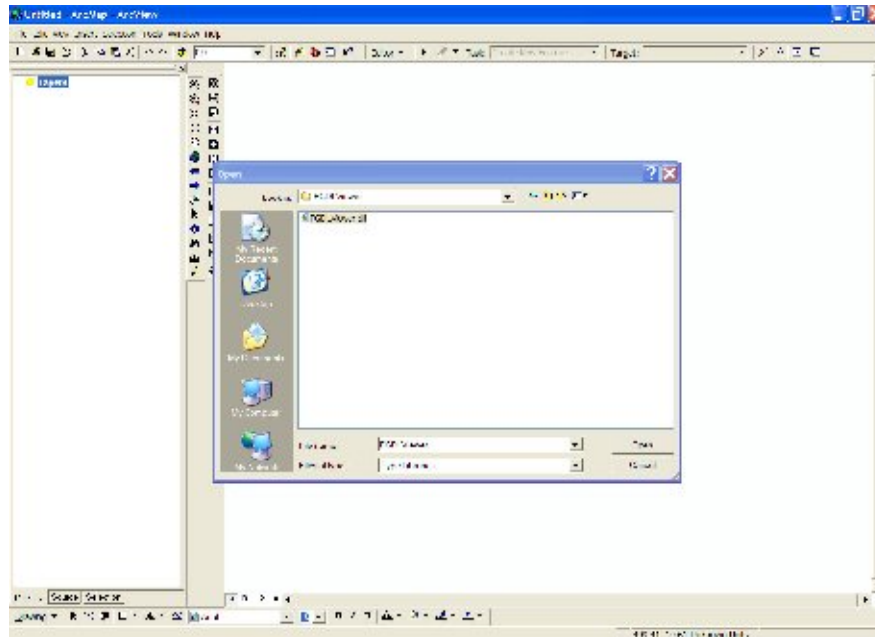
9. In the *Customize* dialog box make sure that the *Toolbars* tab is selected.

10. At the bottom of the dialog box click **Add from File**.

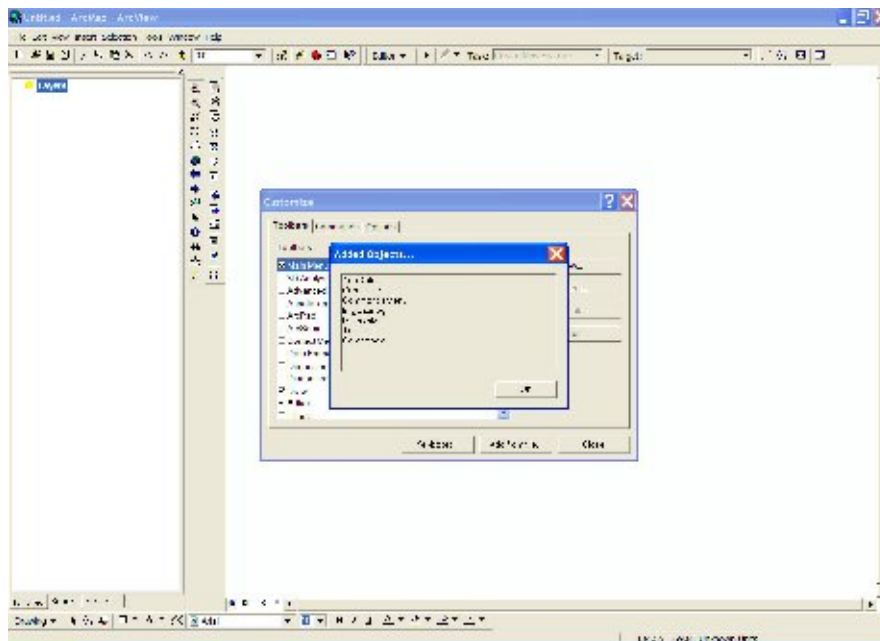


11. Navigate to the folder **C:\FGDLViewer**.

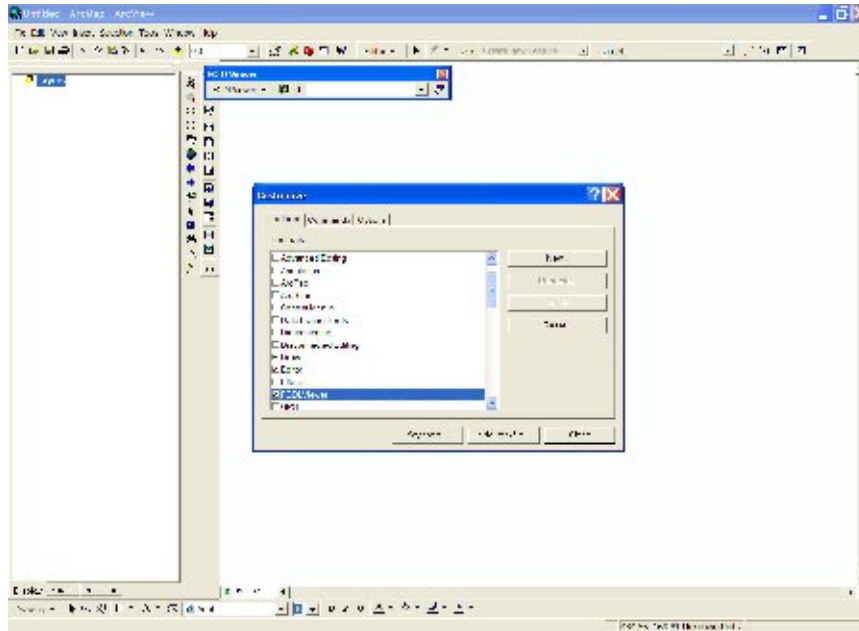
12. Select the file **FGDLViewer.dll** and click **Open**.



b. A list of added objects then appears on the screen. Click **OK**.



13. On the toolbars list check the box next to *FGDL Viewer*.

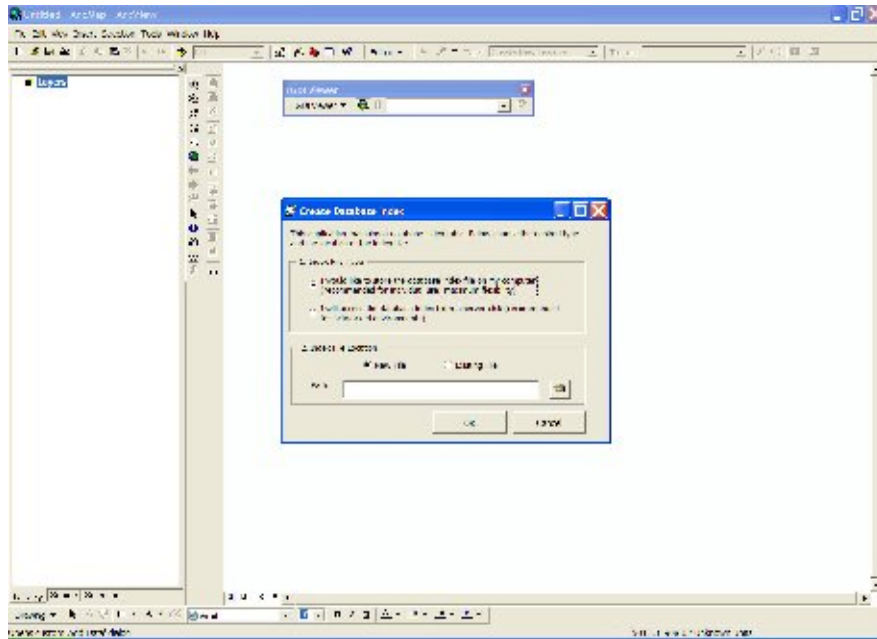


c. The viewer will then appear in your program window. Click **Close**.

Part 3: Using the toolbar for the first time

1. Index File Types

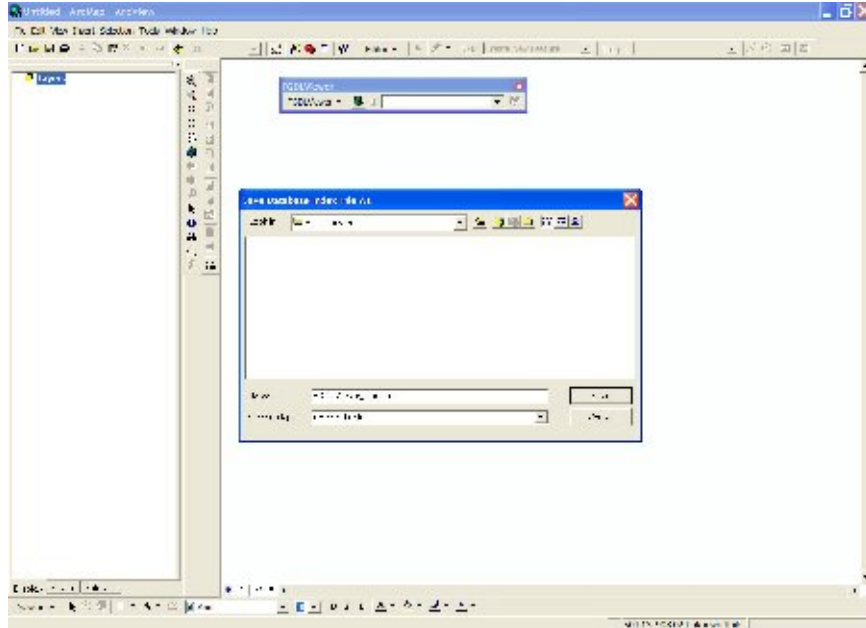
The first time you use the viewer you must create a database index. If you are using ArcMap on a non-networked computer select the first option.



If you are using ArcMap on a networked environment choose the second option.

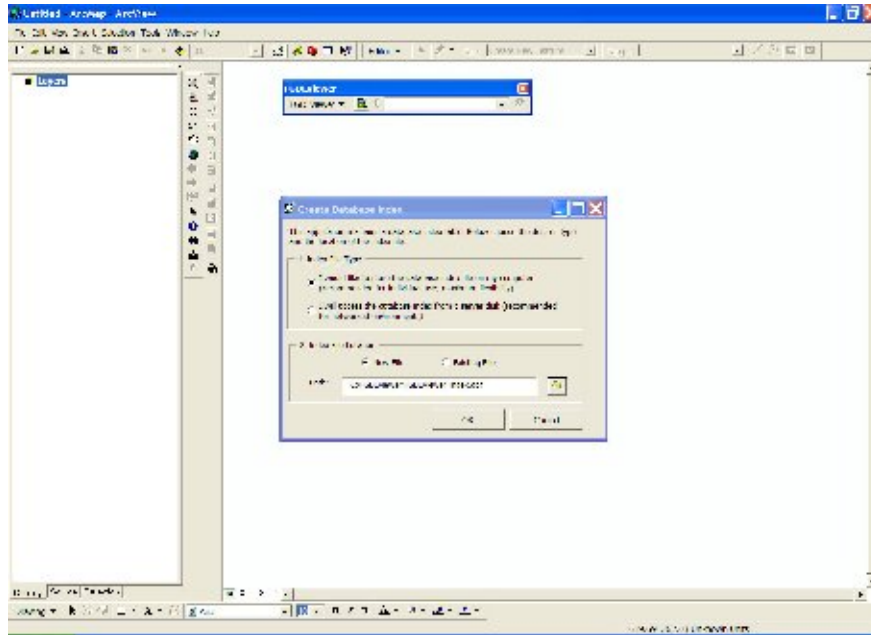
2. *Index File Location*

If you have never installed the viewer on this machine before choose New File and navigate to a location (preferably the same location that you installed the viewer (i.e. C:\FGDLViewer\)) to install the database file.

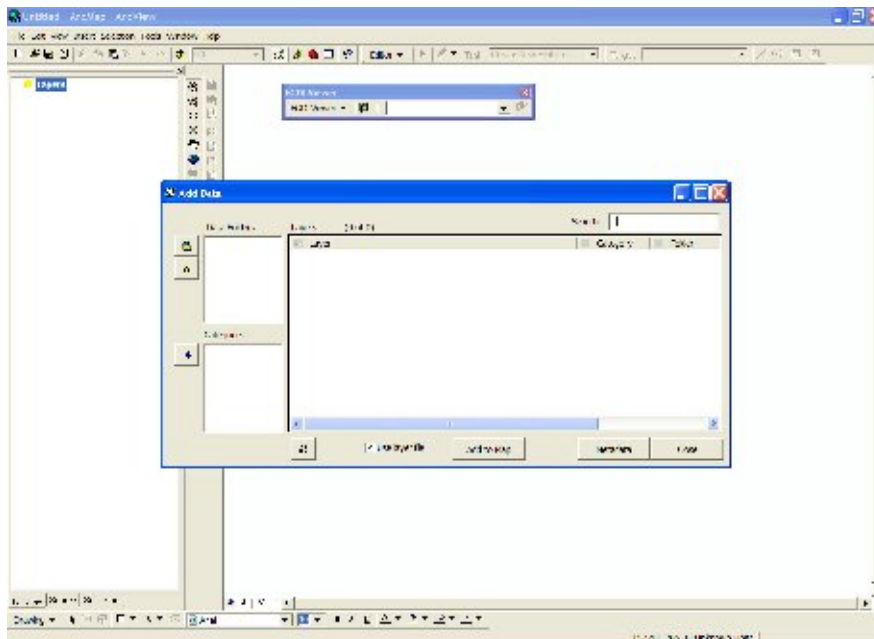


- a. The default file name is *FGDLViewer_index.dbf*. If you choose not to use the default file name, choose a filename with no spaces or special characters.
- b. Click **Save**

3. When you return to the main *Create Database Index* dialog box click **OK**.

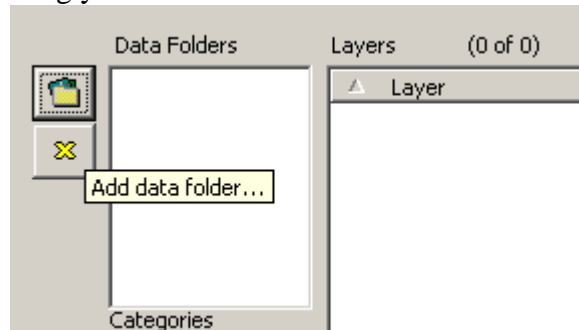


The *Add Data* dialog box will then appear.

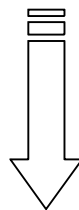
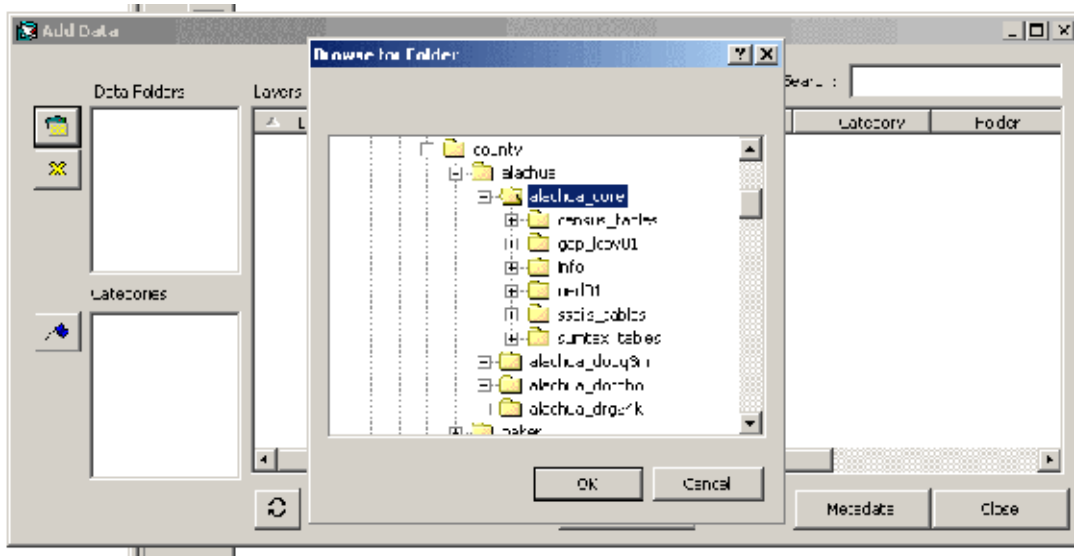


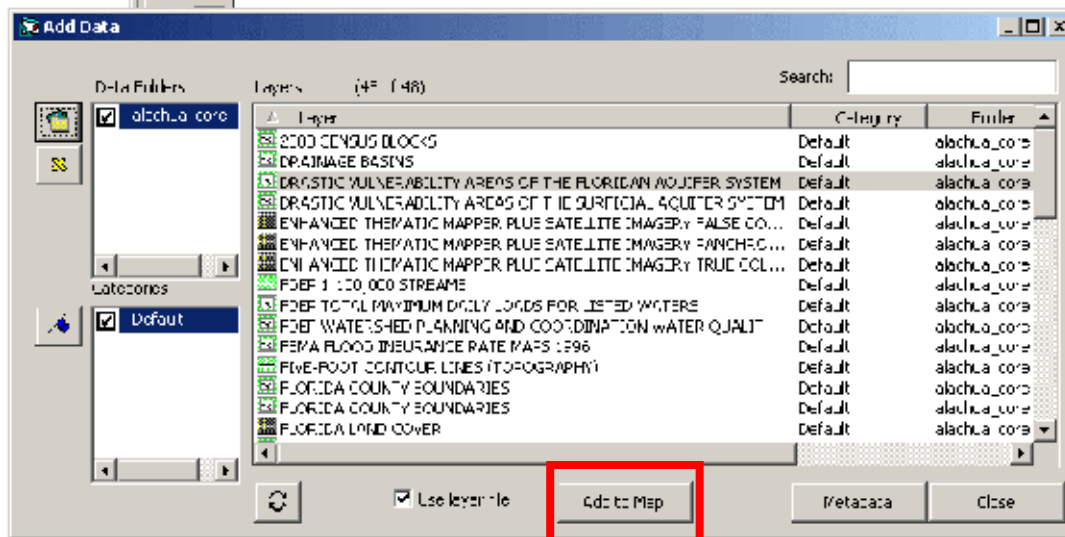
Part 4: Adding data to the Viewer

1. Click the **Add Data folder...** button located on the left side of the dialog box to browse to the folder containing your data.



2. After browsing and selecting the folder containing your datasets, the complete contents of that folder appear in the main Add Data dialog box.





Add to map

To add layer(s) to your map

3. Select the layer you want to add. Select multiple layers by holding down the **CTRL** key while you select each layer.
4. Click **Add to Map** and the layers will be drawn and added to the Table of Contents.